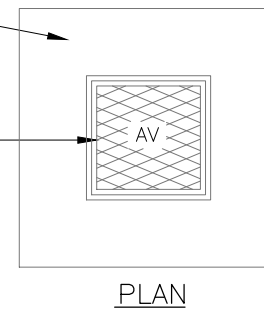


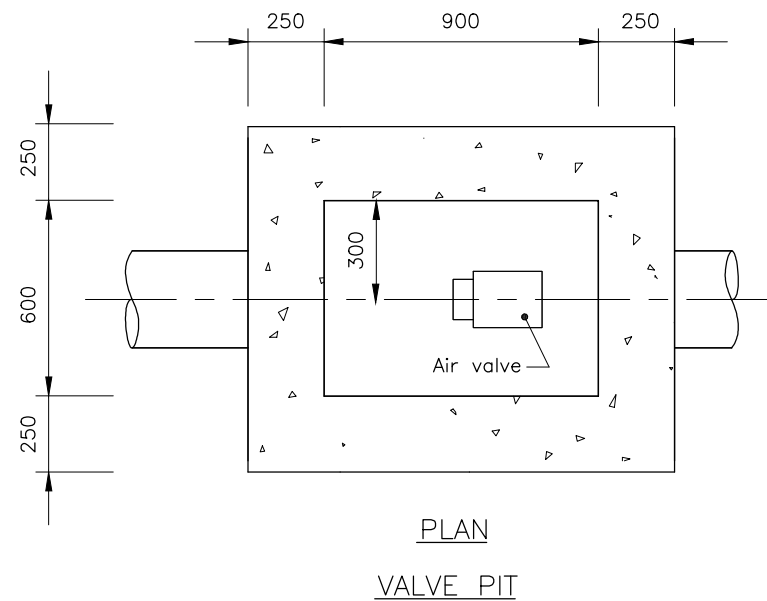
200 x 200 x 100 OPEN GRADED GRAVEL. ALTERNATIVELY PROVIDE A PIPE OUTLET REFER PROJECT DRAWINGS.

RECYCLED PLASTIC SURROUND PAINTED BLUE (WATER), RED (SEWER) OR LILAC (RECYCLED).

CAST IRON BOX (229x178 OPENING, 254 DEEP) MARKED WITH 60mm HIGH LETTER RAISED 3mm.



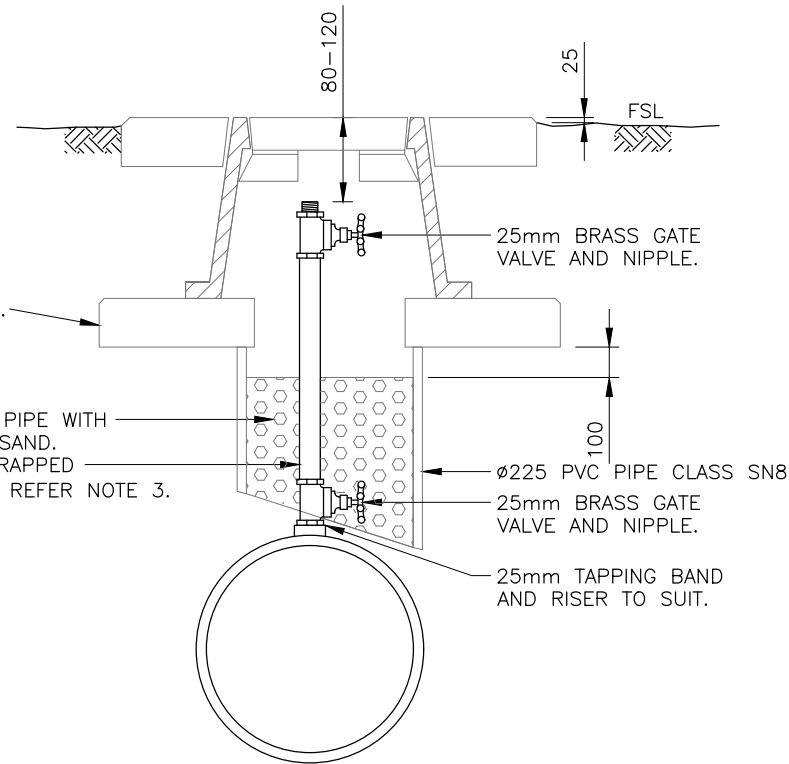
ELEVATION



PLAN
VALVE PIT

RECYCLED PLASTIC SURROUND.

BACKFILL PIPE WITH BEDDING SAND.
Ø25 GALV. RISER WRAPPED WITH "DENSO" TAPE REFER NOTE 3.



AIR RELEASE

NOTES

1. THE INSTALLATION SHALL BE SUCH THAT THE AIR VALVE CAN BE REMOVED WHILE THE BALL VALVE REMAINS IN PLACE.
2. Ø50 AIR VALVES SHALL BE SUPPLIED WITH ADAPTOR FLANGE SUITABLE FOR CONNECTION TO THE Ø80 DICL RISER.
3. THE FULL LENGTH OF THE GALV M.S. RISER PIPE INCLUDING UNDERGROUND FLANGES SHALL BE EPOXY COATED OR WRAPPED WITH "DENSO" PROTECTIVE COATING APPLIED IN ACCORDANCE WITH THE MANUFACTURER'S INSTRUCTIONS.
(A) DENSO 360 PRIMER TO CLEAN METAL;
(B) WRAP OF COLD APPLIED DENSO 760 TAPE;
(C) WRAP OF DENSO 931 SELF ADHESIVE PVC TAPE.
4. WATER MAINS Ø250 & SMALLER:- WALLS OF PIT TO EXTEND BELOW PIPE, PROVIDE 200mm SPACE BETWEEN WATER MAIN & FLOOR OF PIT.
5. CONCRETE SHALL BE N32 MINIMUM IN ACCORDANCE WITH AS1379 & AS3600.
6. PROVIDE A FINE NON-SLIP SURFACE WITH A WOOD FLOAT TO THE TOP SURFACE OF ALL WALLS.
7. COMPACTED SAND BACKFILL SHALL BE BROUGHT UP TO THE UNDERSIDE OF THE AIR VALVE PIT.
8. AIR VALVES SHALL BE PLACED AT THE HIGH POINT OF ALL TRUNK MAINS.
9. ALL FLANGES IN ACCORDANCE WITH AS4087 - TABLE C UNLESS NOTED OTHERWISE ON PROJECT DRAWINGS.
10. 50mm AIR VALVES TO BE SINGLE ACTION AIR VALVE.
11. ALL BOLTS TO BE STAINLESS STEEL TO AS2837/316 WITH NUTS & WASHERS TO AS2837/304.
12. THE TEE OFF-TAKE IS TO BE APPROPRIATELY SIZED.
13. AIR VALVE TYPE AND SIZING TO SUIT SPECIFIC REQUIREMENTS OF SITE.

REVISIONS	DATE
D MINOR AMENDMENTS	05/12/23
C MINOR AMENDMENTS	24/10/17
B CRC DRAWING ADOPTED	28/11/12
A ORIGINAL ISSUE	12/03/04

DISCLAIMER
The authors and sponsoring organisations shall have no liability or responsibility to the user or any other person or entity with respect to any liability, loss or damage caused or alleged to be caused, directly or indirectly, by the adoption and use of these Standard Drawings including, but not limited to, any interruption of service, loss of business or anticipatory profits, or consequential damages resulting from the use of these Standard Drawings. Persons must not rely on these Standard Drawings as the equivalent of, or a substitute for, project-specific design and assessment by an appropriately qualified professional.



AIR VALVE PIT / AIR RELEASE

Standard
Drawing
S2001

A	B	C	D
---	---	---	---