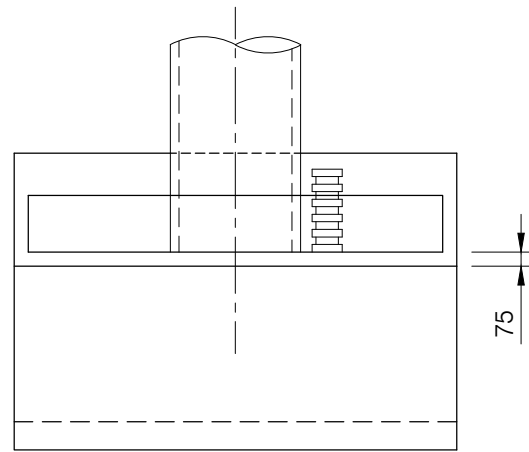
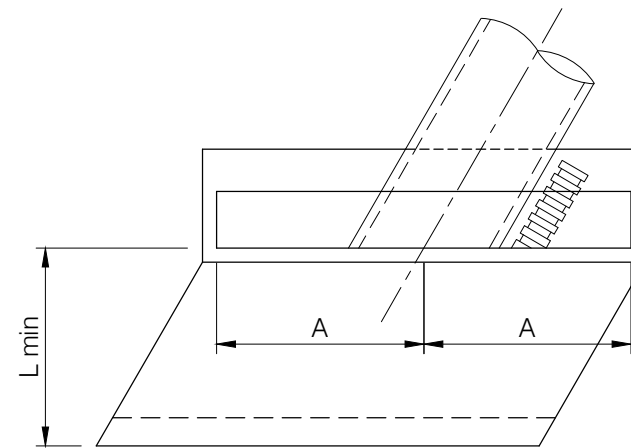


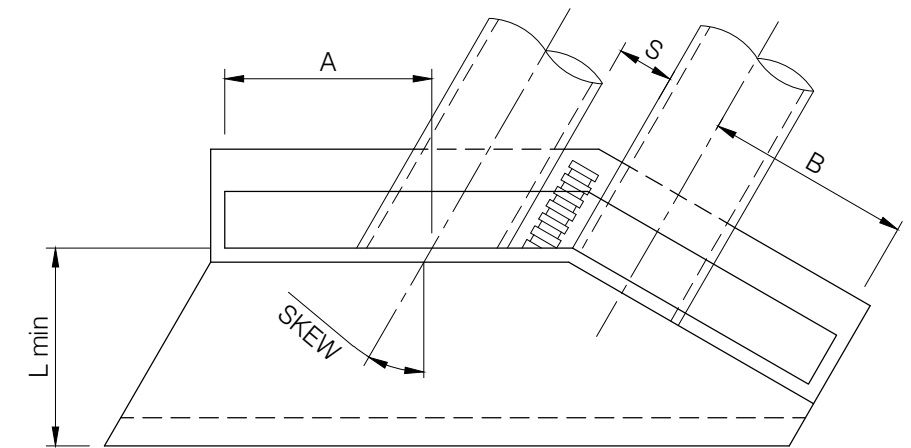
For dimension S refer to Standard drawing S1046.



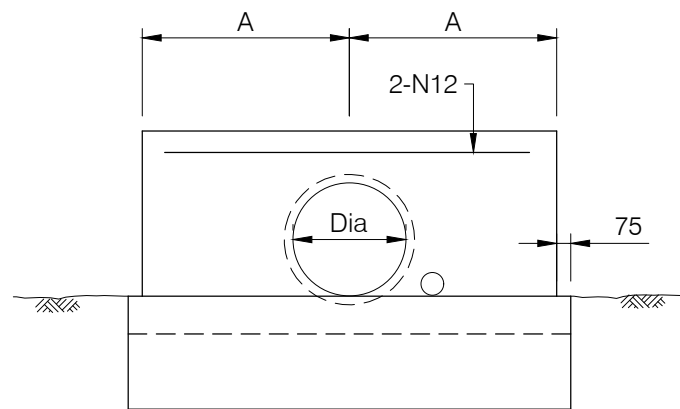
PLAN



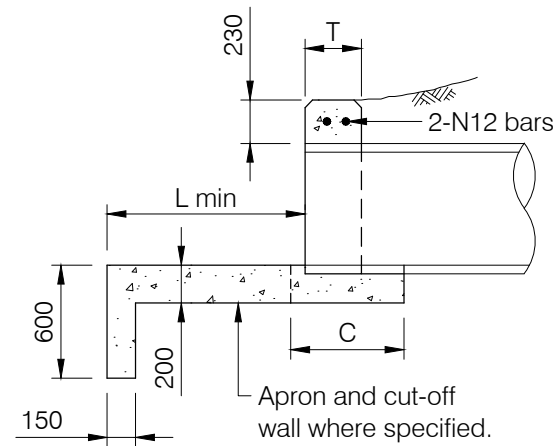
PLAN - SINGLE SKEW PIPE



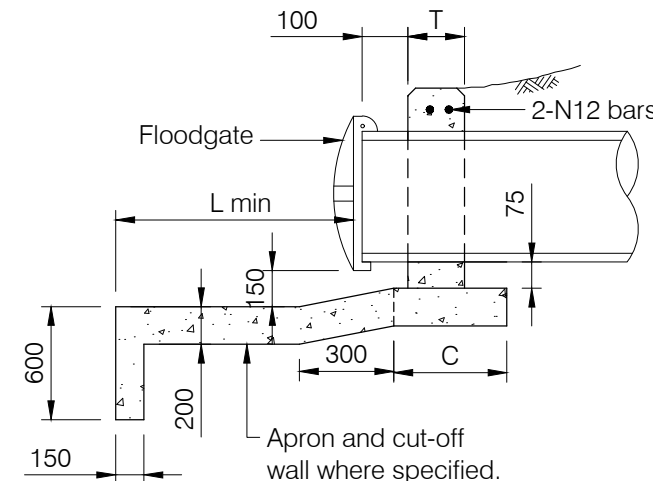
PLAN - MULTIPLE SKEW PIPE



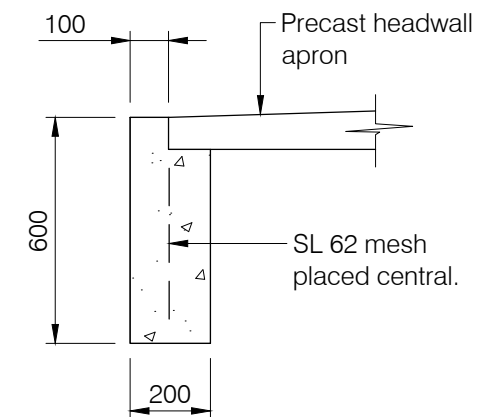
ELEVATION



SECTION



SECTION  
HEADWALL WITH FLOODGATE



CUT-OFF WALL TO  
PRECAST HEADWALLS

TABLE OF DIMENSIONS

Dim	Nominal internal diameter				
	375	450	525	600	675
A	700	825	950	1100	1250
B	600	975	850	975	1100
C	450	450	600	600	600
L	565	675	790	900	1015
T	225	225	300	300	300

NOTES

- Concrete shall be graded N32 minimum in accordance with AS 1379 and AS 3600. Minimum cover to be 40mm.
- In areas where the pipe invert is below HAT level, concrete shall be grade N40. Minimum cover to be 45mm.
- For apron and cut-off wall requirements, length (L) and skew angle refer project drawings.
- Approved precast headwalls may be alternately used with a cut-off wall as detailed.
- Stone pitching to be provided to ends of headwall where batter slope exceeds 1 in 4.
- All dimensions to be in millimetres.

REVISIONS	DATE
C MINOR AMENDMENTS TO NOTES	05/12/23
B SUBSOIL NOTE DELETED FROM ELEVATION	13/01/06
A ORIGINAL ISSUE	12/03/04

**DISCLAIMER**  
The authors and sponsoring organisations shall have no liability or responsibility to the user or any other person or entity with respect to any liability, loss or damage caused or alleged to be caused, directly or indirectly, by the adoption and use of these Standard Drawings including, but not limited to, any interruption of service, loss of business or anticipatory profits, or consequential damages resulting from the use of these Standard Drawings. Persons must not rely on these Standard Drawings as the equivalent of, or a substitute for, project-specific design and assessment by an appropriately qualified professional.



CONCRETE PIPE HEADWALL  
Ø375mm TO Ø675mm

Standard  
Drawing  
S1075

A	B	C		
---	---	---	--	--