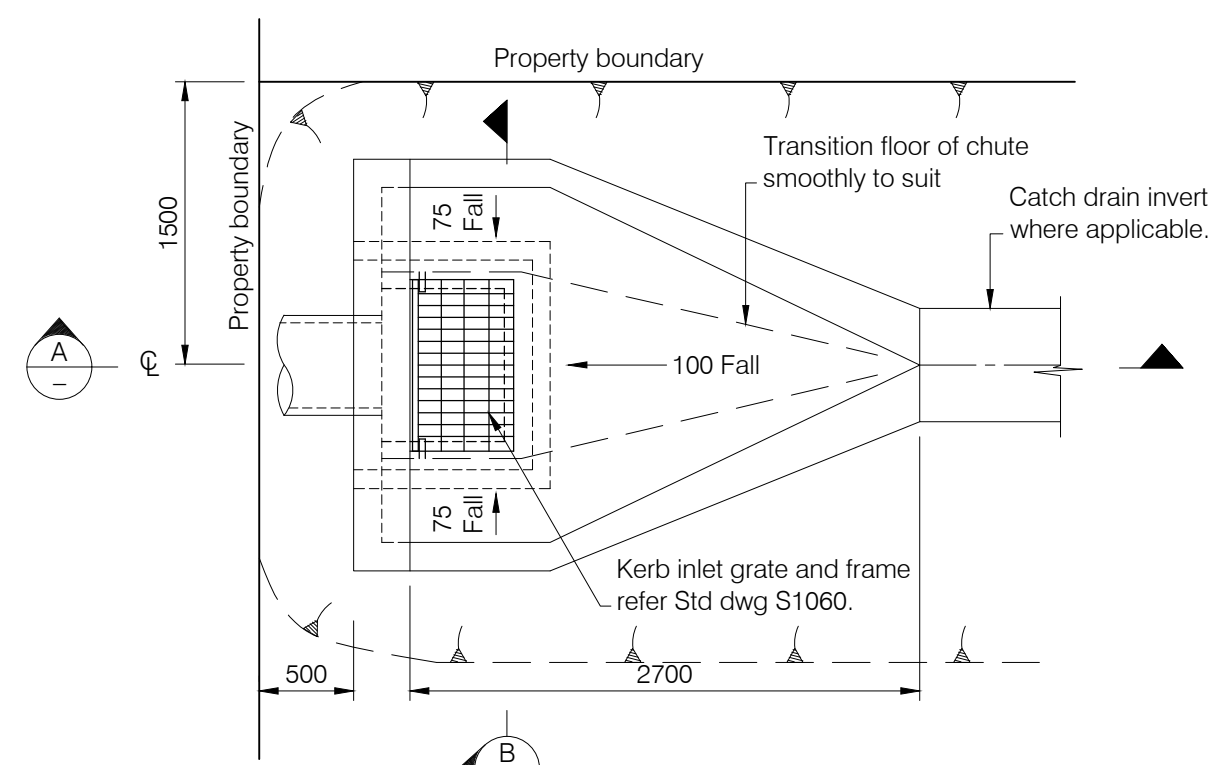


PLAN
(Grate omitted for clarity)
FIELD INLET
(TYPE B)



PLAN
FIELD INLET
(TYPE A)

NOTES

1. Concrete to be grade N32 minimum in accordance with AS 1379 and AS 3600. Minimum cover to be 40mm.
2. In areas where any part of the pit is below HAT level concrete shall be grade N40 minimum and wall thickness increased to 200 minimum. Minimum cover to be 45mm.
3. All steel work shall be hot dipped galvanized after fabrication to conform with AS 1650.
4. For pit depths less than 1.50m wall and base reinforcing may be omitted.
5. For pit depths greater than 2.0m wall and base reinforcing to be increased to SL 81 mesh. Pits greater than 2.5m depth shall be engineer designed and specifically detailed.
6. All dimensions are in millimetres.
7. Pre-cast units in accordance with these requirements are acceptable.

REVISIONS	DATE
D MINOR AMENDMENTS TO NOTES	05/12/23
C NOTE ADDED	27/08/20
B SECTION B REVISED	01/02/07
A ORIGINAL ISSUE	12/03/04

DISCLAIMER
The authors and sponsoring organisations shall have no liability or responsibility to the user or any other person or entity with respect to any liability, loss or damage caused or alleged to be caused, directly or indirectly, by the adoption and use of these Standard Drawings including, but not limited to, any interruption of service, loss of business or anticipatory profits, or consequential damages resulting from the use of these Standard Drawings. Persons must not rely on these Standard Drawings as the equivalent of, or a substitute for, project-specific design and assessment by an appropriately qualified professional.



FIELD INLET PITS

Standard Drawing			
S1070			
A	B	C	D