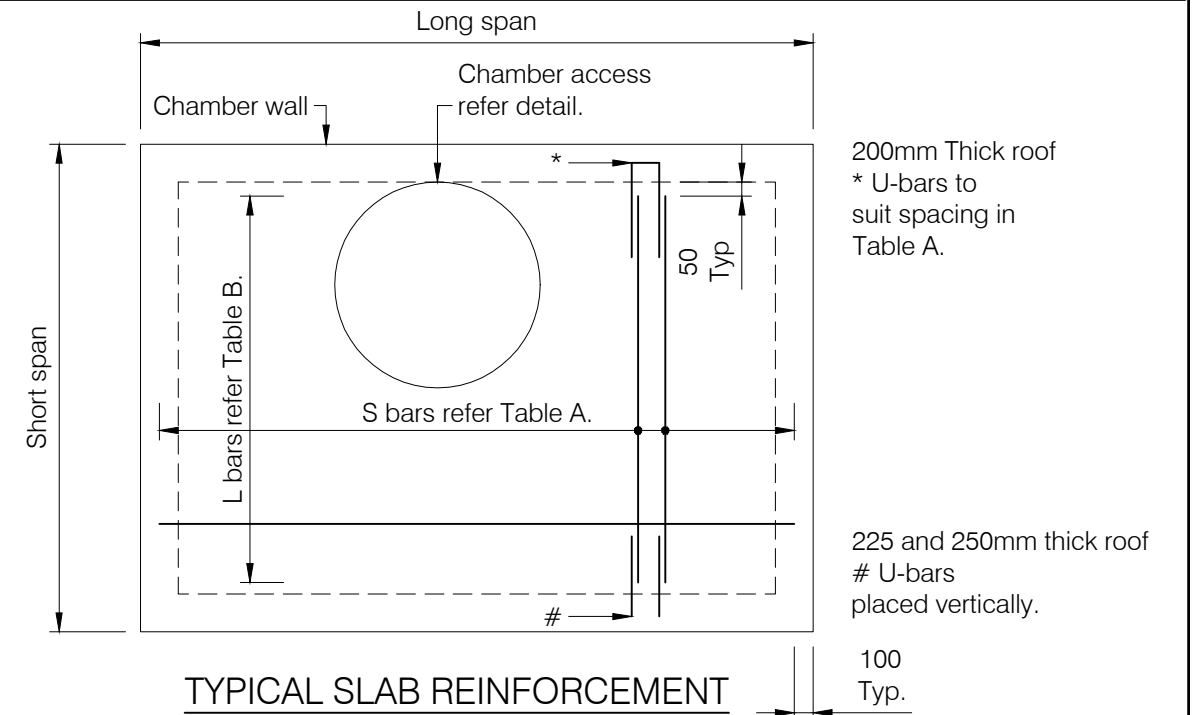


SHORT SPAN	LONG SPAN										SLAB DEPTH
	1200	1400	1600	1800	2000	2200	2400	2600	2800	3000	
1200	N12 AT 150	N16 AT 200	N16 AT 200	N16 AT 200	N16 AT 175	N16 AT 175	N16 AT 175	N16 AT 150	N16 AT 150	N16 AT 150	200
1400		N12 AT 150	N16 AT 200	N16 AT 200	N16 AT 175	N16 AT 175	N16 AT 150	N16 AT 150	N16 AT 150	N16 AT 150	200
1600			N12 AT 150	N16 AT 200	N16 AT 200	N16 AT 175	N16 AT 150	N16 AT 150	N16 AT 150	N16 AT 150	200
1800				N12 AT 150	N16 AT 200	N16 AT 200	N16 AT 200	N16 AT 175	N16 AT 175	N16 AT 175	225
2000					N12 AT 150	N16 AT 200	N16 AT 200	N16 AT 200	N16 AT 175	N16 AT 175	225
2200						N12 AT 150	N16 AT 200	N16 AT 200	N16 AT 175	N16 AT 175	225
2400							N16 AT 200	N16 AT 200	N16 AT 200	N16 AT 175	225
2600								N16 AT 200	N16 AT 200	N16 AT 175	250
2800									N16 AT 200	N16 AT 175	250
3000										N16 AT 175	250

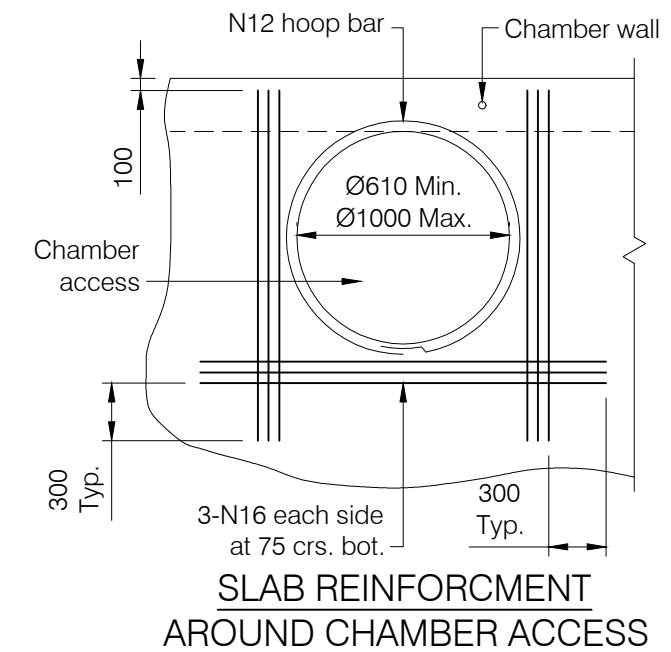
TABLE A : S BARS

SHORT SPAN	LONG SPAN										SLAB DEPTH
	1200	1400	1600	1800	2000	2200	2400	2600	2800	3000	
1200	N12 AT 150	N12 AT 200	N12 AT 200	N12 AT 200	N12 AT 200	N12 AT 200	N12 AT 200	N12 AT 200	N12 AT 200	N12 AT 200	200
1400		N12 AT 150	N12 AT 200	N12 AT 200	N12 AT 200	N12 AT 200	N12 AT 200	N12 AT 200	N12 AT 200	N12 AT 200	200
1600			N12 AT 150	N12 AT 150	N12 AT 200	N12 AT 200	N12 AT 200	N12 AT 200	N12 AT 200	N12 AT 200	200
1800				N12 AT 150	N12 AT 150	N12 AT 200	N12 AT 200	N12 AT 200	N12 AT 200	N12 AT 200	225
2000					N12 AT 150	N12 AT 150	N12 AT 200	N12 AT 200	N12 AT 200	N12 AT 200	225
2200						N12 AT 150	N12 AT 150	N12 AT 150	N12 AT 200	N12 AT 200	225
2400							N16 AT 200	N12 AT 150	N12 AT 150	N16 AT 150	225
2600								N16 AT 200	N16 AT 200	N16 AT 200	250
2800									N16 AT 200	N16 AT 200	250
3000										N16 AT 175	250

TABLE B : L BARS



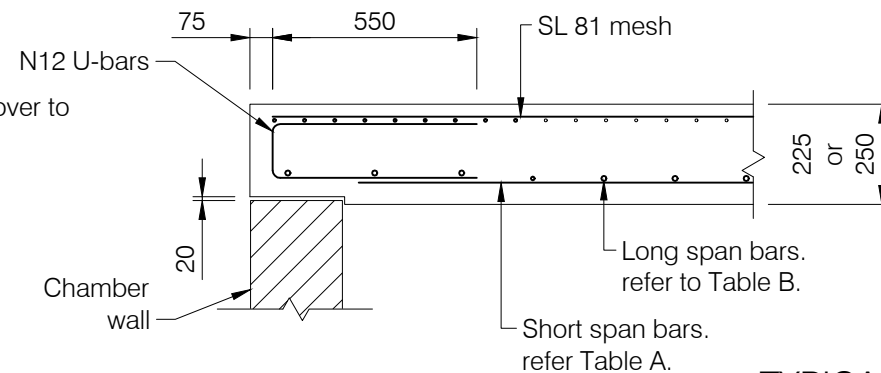
TYPICAL SLAB REINFORCEMENT



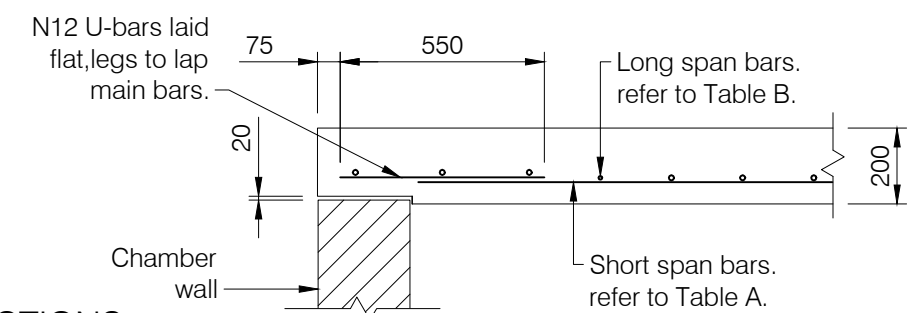
SLAB REINFORCEMENT AROUND CHAMBER ACCESS

NOTES

- Concrete shall be in N32 minimum in accordance with AS 1379 and AS 3600. Minimum cover to be 40mm.
- In areas where any part of the pit is below HAT level all concrete shall be N40 minimum. Minimum cover to be 45mm.
- All laps in reinforcement shall be :- N12-300, N16-400.
- Formwork in accordance with AS 3610.
- Designed to Austroads Bridge code, W7 wheel load, dynamic factor 0.4.
- Maximum fill over roof slab shall be 3000mm.
- For details of chamber walls, floor and access size refer Project Drawings.
- All dimensions in millimetres.



TYPICAL SECTIONS



REVISIONS	DATE
B MINOR AMENDMENTS TO NOTES	05/12/23
A ORIGINAL ISSUE	12/03/04

DISCLAIMER
 The authors and sponsoring organisations shall have no liability or responsibility to the user or any other person or entity with respect to any liability, loss or damage caused or alleged to be caused, directly or indirectly, by the adoption and use of these Standard Drawings including, but not limited to, any interruption of service, loss of business or anticipatory profits, or consequential damages resulting from the use of these Standard Drawings. Persons must not rely on these Standard Drawings as the equivalent of, or a substitute for, project-specific design and assessment by an appropriately qualified professional.



**ACCESS CHAMBER
 RECTANGULAR ROOF SLAB**

Standard Drawing
S1066

A	B		
---	---	--	--