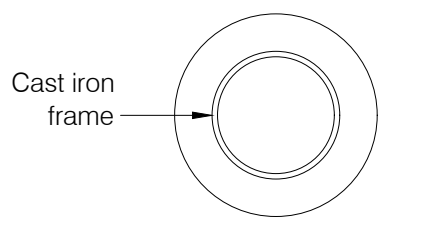


NOTES

1. Concrete shall be grade N32, in accordance with AS 1379 and AS 3600. Minimum cover to be 40mm.
2. In areas where any part of the pit is below RL 1.800, all concrete shall be grade N32. Minimum cover to be 65mm. Thickening of concrete section may be required.
3. Cover shall be cast iron (Refer specifications for class).
4. Manholes greater than 1.5m diameter shall be engineer designed and detailed.
5. 2m long 100Ø subsoil drain to be provided to the sand bedding.
6. All dimensions are in millimetres.
7. Pre-cast units in accordance with these requirements are acceptable

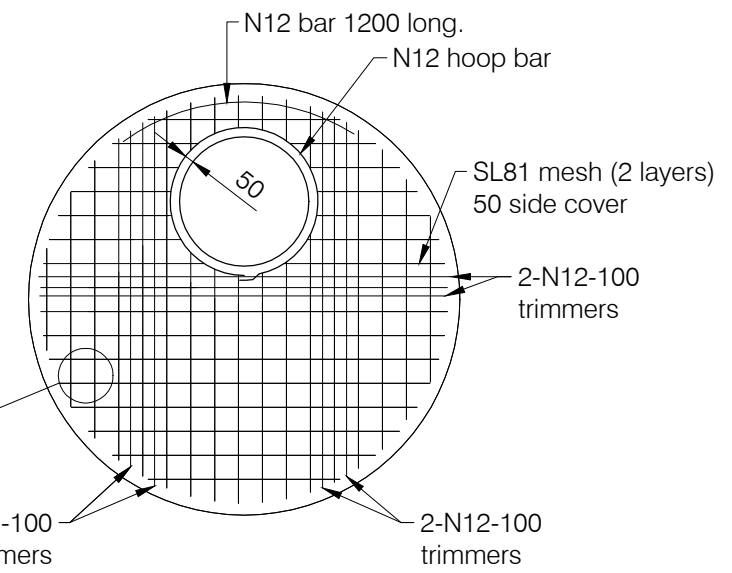


CONCRETE RING
(Cover omitted for clarity)

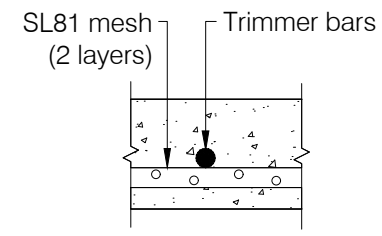
Manhole floor to have a nominal fall of 75mm from edges to the invert lines.

SECTION

Subsoil tail (refer note 6).



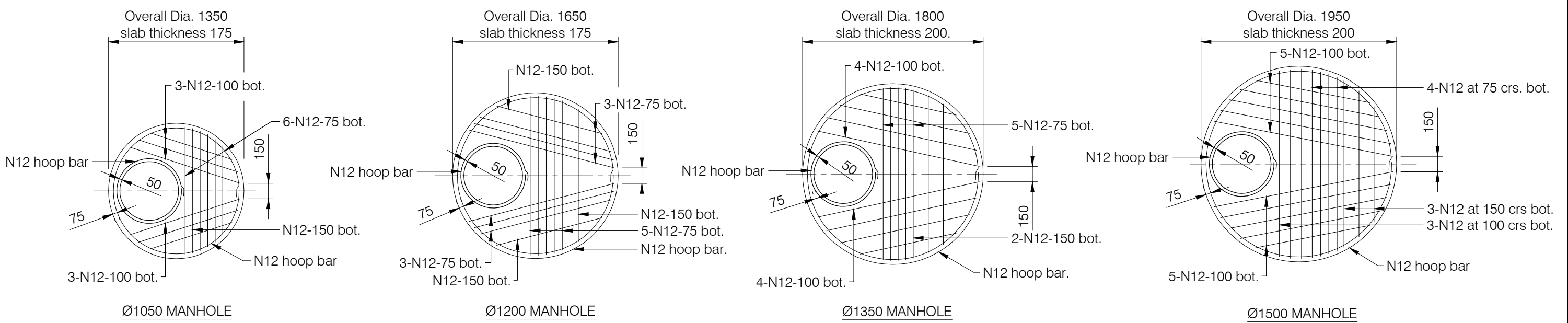
FABRIC REINFORCEMENT ALTERNATIVE



ROOF SECTION

FABRIC REINFORCED SLAB

NOM DIA	ROOF THICKNESS
1050	175
1200	175
1350	200
1500	250



COVER REINFORCING

DISCLAIMER

The authors and sponsoring organisations shall have no liability or responsibility to the user or any other person or entity with respect to any liability, loss or damage caused or alleged to be caused, directly or indirectly, by the adoption and use of these Standard Drawings including, but not limited to, any interruption of service, loss of business or anticipatory profits, or consequential damages resulting from the use of these Standard Drawings. Persons must not rely on these Standard Drawings as the equivalent of, or a substitute for, project-specific design and assessment by an appropriately qualified professional.



STORMWATER MANHOLES
Ø1050 TO Ø1500

Standard Drawing
S1065

REVISIONS	DATE
D MINOR AMENDMENT	05/12/23
C NOTE ADDED	27/08/20
B STEP IRONS REMOVED IN PLAN	01/02/07
A ORIGINAL ISSUE	12/03/04

A	B	C	D
---	---	---	---