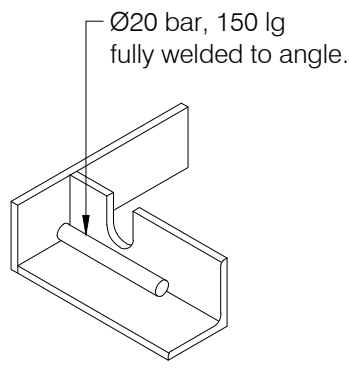
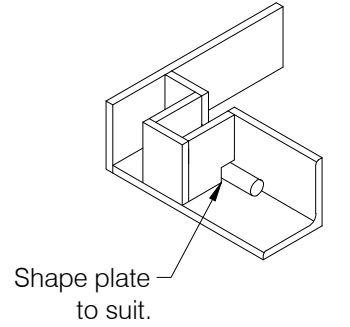


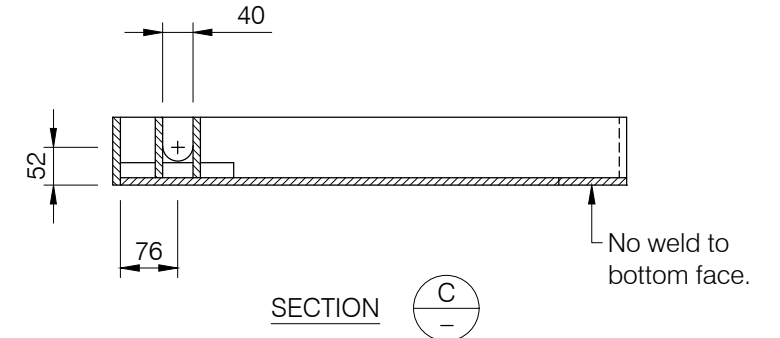
SECTION B



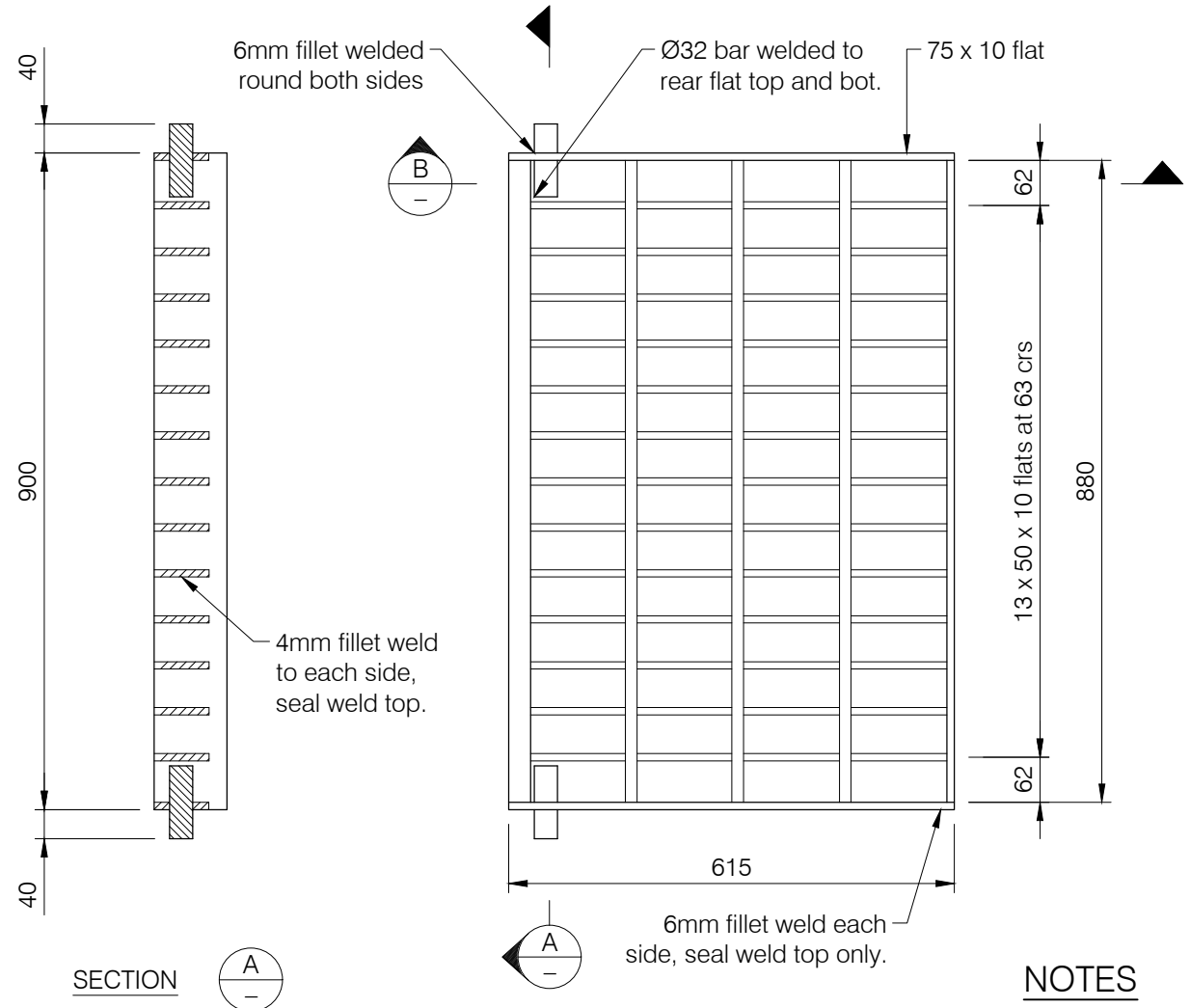
HINGE DETAIL (SHIELD OMITTED)



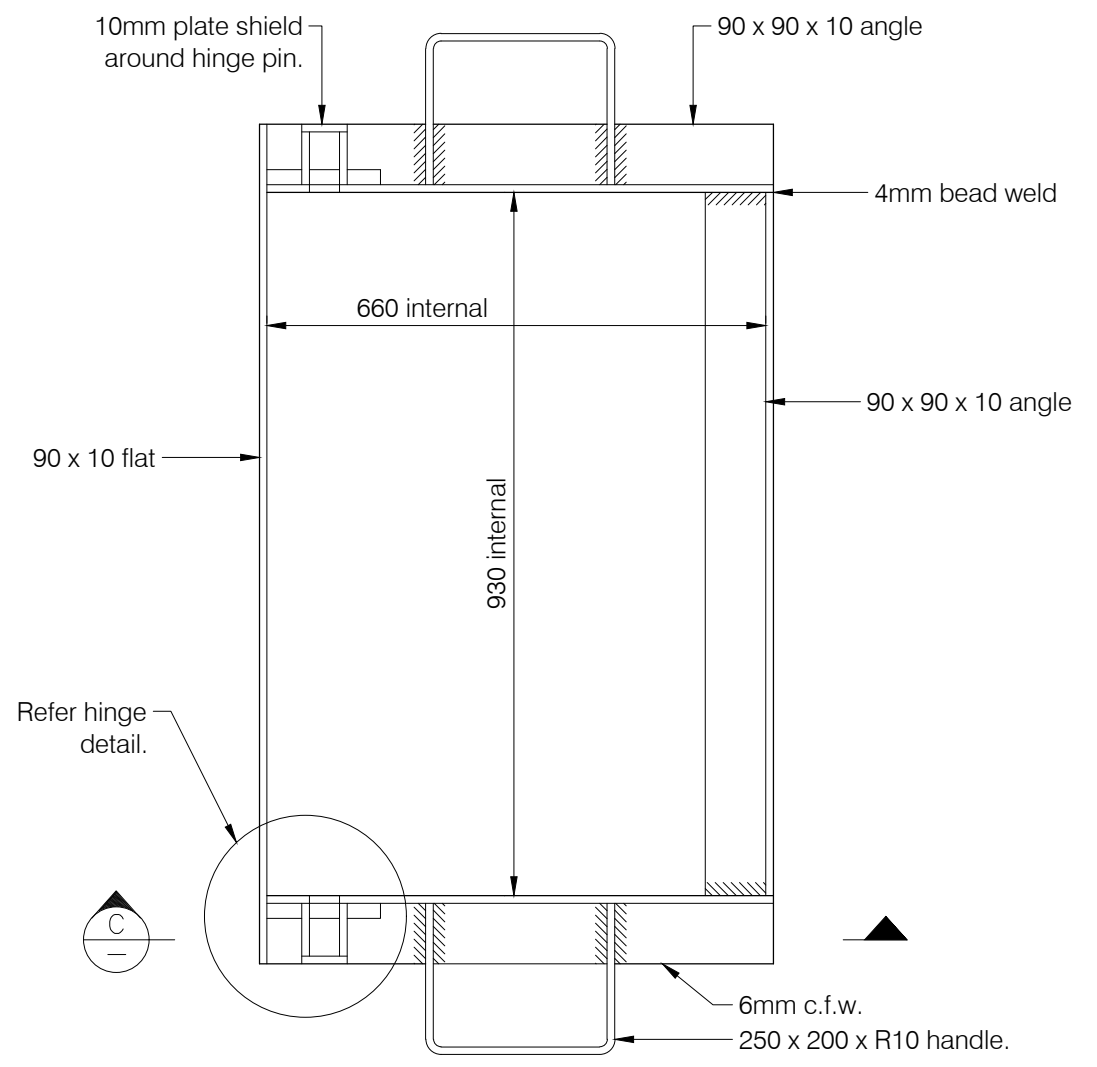
HINGE DETAIL (WITH SHIELD)



SECTION C



GRATE PLAN  
(Mass - 63kg approx)



FRAME PLAN  
(Mass - 41kg approx.)

**NOTES**

1. All welds to conform with AS 1554 and to be 6 c.f.w. unless noted otherwise.
2. All steelwork shall be hot dipped galvanised after fabrication to conform with AS 1650.
3. All steel flats, bars and angles to be grade 250 as per AS 3679.
4. All dimensions in millimetres.
5. Alternate grates to that shown may be considered with Council approval.
6. Pre-cast units in accordance with these requirements are acceptable.
7. Hinge grate to be installed with a locking device

REVISIONS	DATE
D MINOR AMENDMENTS	05/12/23
C NOTE ADDED	27/08/20
B NOTE 5 ADDED AND BARS ADDED TO GRATE	01/02/07
A ORIGINAL ISSUE	12/03/04

**DISCLAIMER**  
The authors and sponsoring organisations shall have no liability or responsibility to the user or any other person or entity with respect to any liability, loss or damage caused or alleged to be caused, directly or indirectly, by the adoption and use of these Standard Drawings including, but not limited to, any interruption of service, loss of business or anticipatory profits, or consequential damages resulting from the use of these Standard Drawings. Persons must not rely on these Standard Drawings as the equivalent of, or a substitute for, project-specific design and assessment by an appropriately qualified professional.



KERB INLET GRATE AND FRAME

Standard Drawing  
**S1060**

A	B	C	D
---	---	---	---