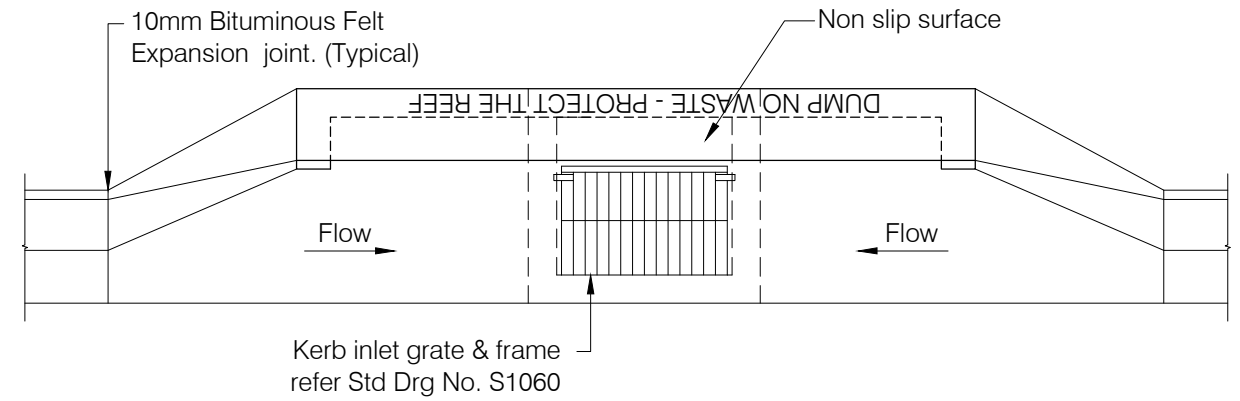
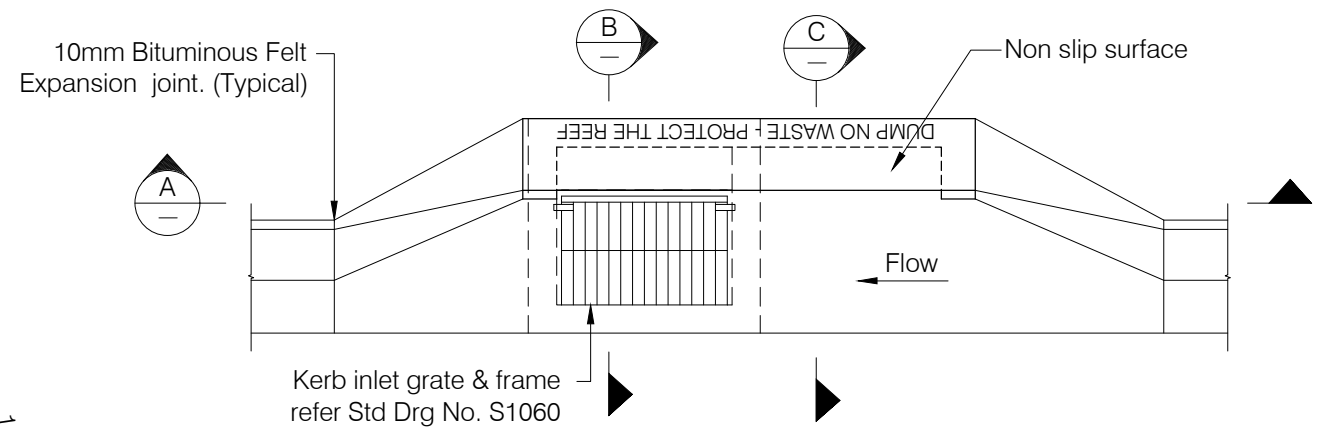


TABLE OF DIMENSIONS

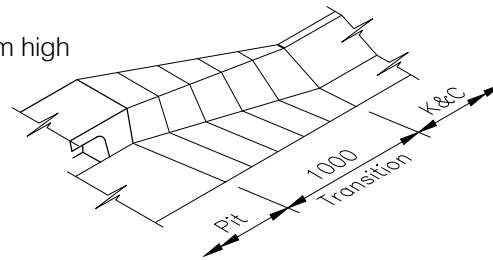
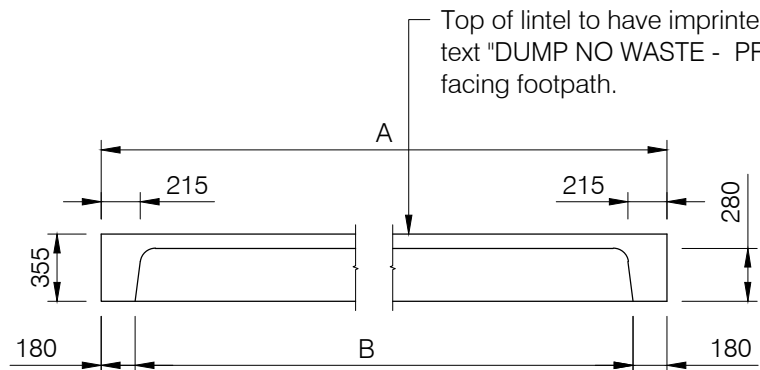
Lintel size	A	B	X	Mass (kg)
Small (S)	2400	2040	400	445
Medium (M)	3600	3240	690	550
Large (L)	4800	4440	1000	725



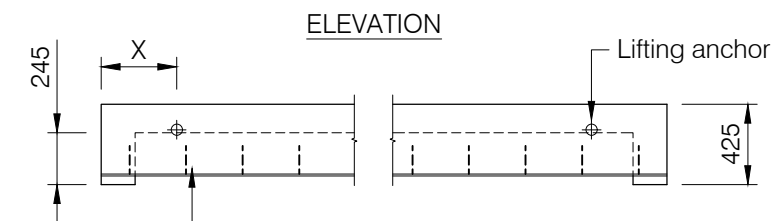
INLET IN SAG



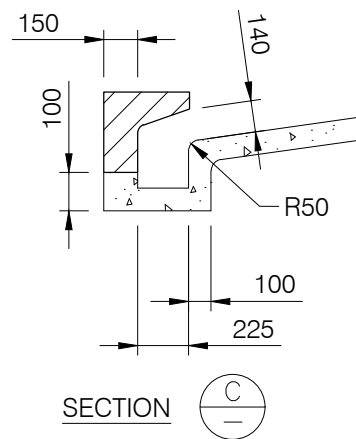
INLET ON GRADE



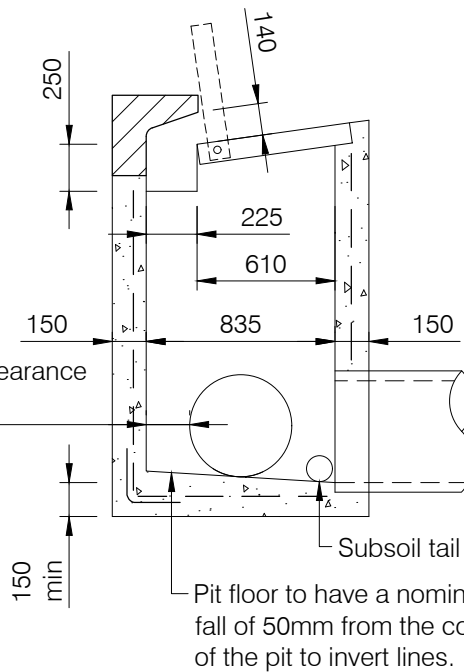
TRANSITION TO LAYBACK KERB & CHANNEL



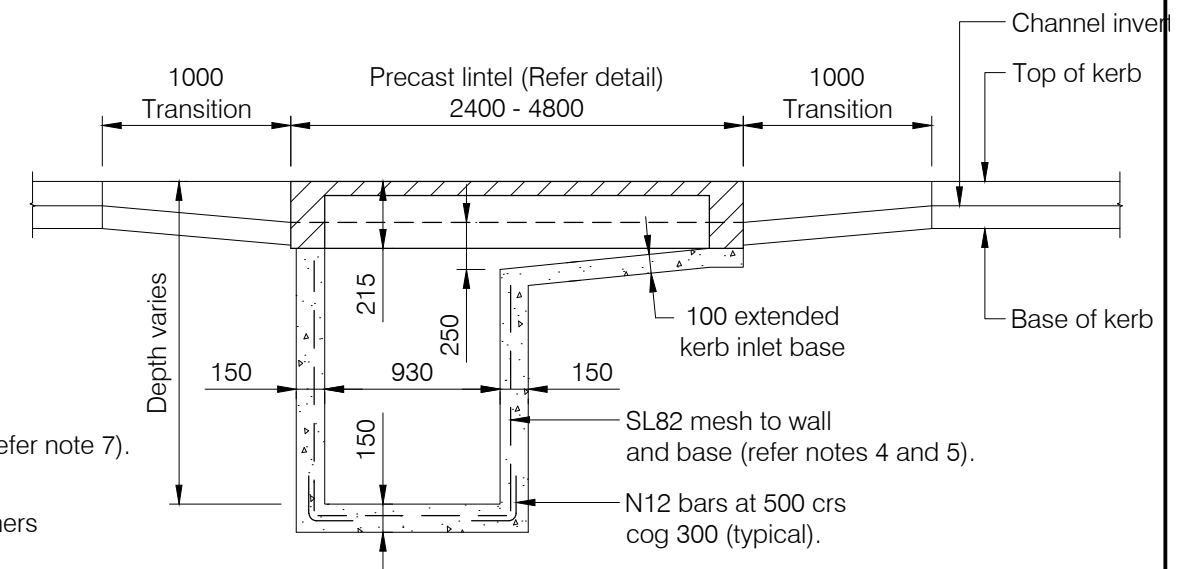
PRECAST LINTEL DETAIL



SECTION



SECTION



SECTION

GRATED KERB INLET PIT

NOTES:-

- Concrete to precast lintel and other concrete elements to be grade N32 minimum in accordance with AS 1379 and AS 3600. Minimum cover to be 40 mm.
- In areas where any part of the pit is below HAT level, concrete shall be N40 minimum. Minimum cover to be 45mm.
- Lifting anchors to be "Swiftlift" or equivalent, 1.3 tonne galvanised and installed to manufacturers specification.
- For pit depths less than 1.50m, wall and base reinforcing may be omitted.
- For pit depths greater than 2.0m, wall and base reinforcing to be increased to SL81 mesh. Pits greater than 2.5m depth shall be engineer designed and specifically detailed.
- Pipes shall enter pits through a single wall face. Pipes are not permitted to enter through the corner of the pit.
- 2m long 100Ø subsoil drain to be provided to the sand bedding of all U/S pipes.
- All dimensions in millimetres.
- Lintel top to have slip resistant surface.
- Provide a minimum 50mm fall in the tray for self cleansing.
- Pre-cast units in accordance with these requirements are acceptable.

DISCLAIMER

The authors and sponsoring organisations shall have no liability or responsibility to the user or any other person or entity with respect to any liability, loss or damage caused or alleged to be caused, directly or indirectly, by the adoption and use of these Standard Drawings including, but not limited to, any interruption of service, loss of business or anticipatory profits, or consequential damages resulting from the use of these Standard Drawings. Persons must not rely on these Standard Drawings as the equivalent of, or a substitute for, project-specific design and assessment by an appropriately qualified professional.



GRATED KERB INLET PIT
PIPE DIA < 600mm

Standard Drawing
S1050

REVISIONS	DATE
D MINOR AMENDMENTS	05/12/23
C NOTE ADDED	27/08/20
B MINOR AMENDMENTS	23/10/17
A ORIGINAL ISSUE	12/03/04

A	B	C	D
---	---	---	---