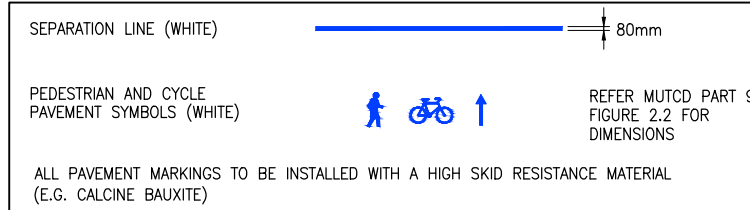


PAVEMENT MARKING LEGEND



CONCRETE NOTES:

- ALL MATERIALS AND CONSTRUCTION SHALL BE TO THE REQUIREMENTS OF AS3600 CONCRETE STRUCTURES.
- CONCRETE GRADE SHALL BE:

GENERAL MINIMUM	N32
EXPOSED SURFACES <1km FROM COAST	N40
ELEMENTS IN CONTACT WITH TIDAL WATERS	N50
- FINISHES TO CONCRETE SURFACES SHALL BE:

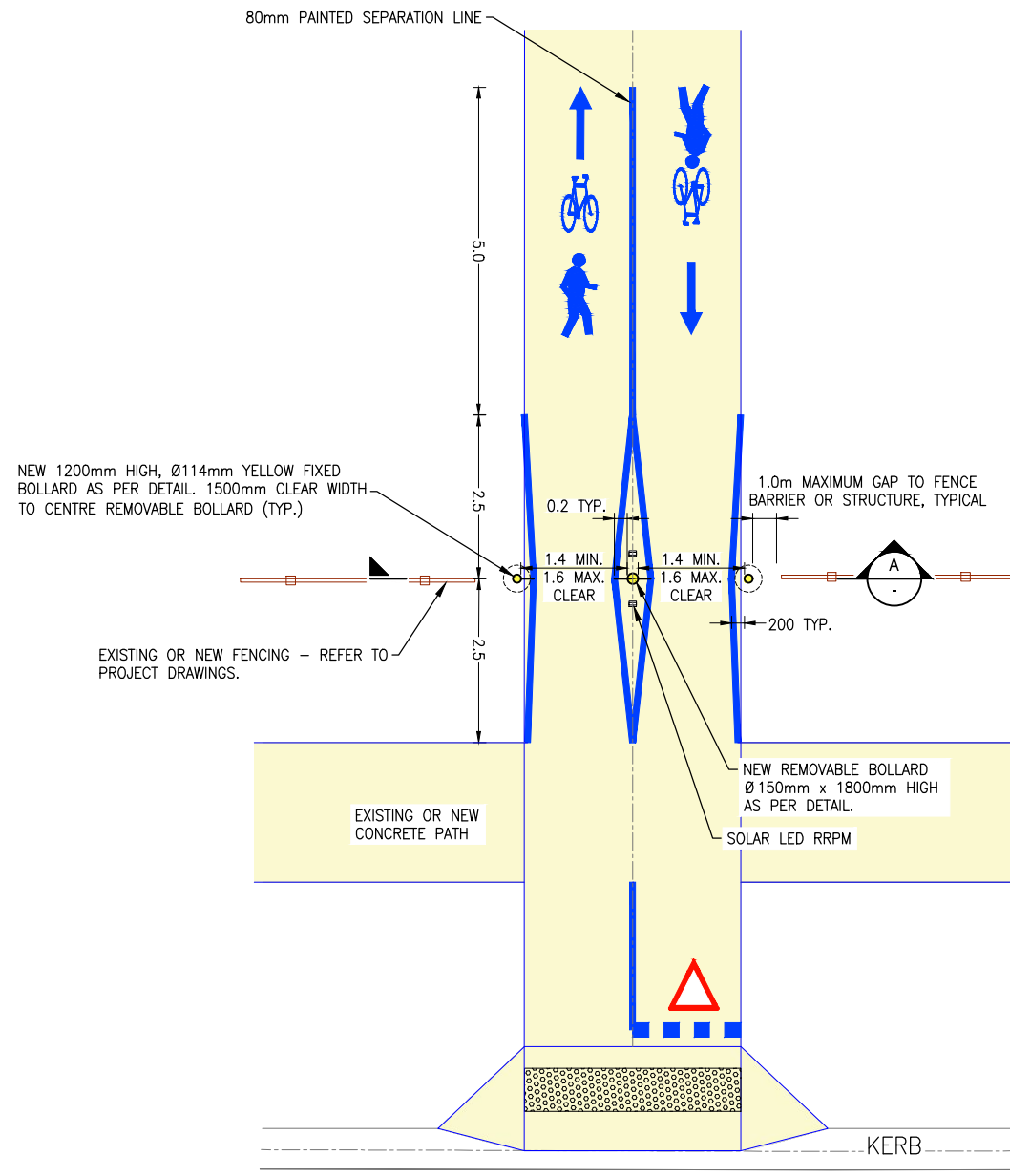
CENTRAL BOLLARD FOOTING TOP FINISH	AS PER SURROUNDING SLAB
------------------------------------	-------------------------
- CONCRETE SHALL BE PLACED AND COMPACTED IN ACCORDANCE WITH THE CEMENT AND CONCRETE ASSOCIATION OF AUSTRALIA'S BASIC GUIDE TO CONCRETE CONSTRUCTION.
- CONCRETE SHALL BE CURED BY CONTINUOUS SPRINKLING, PONDING AND WET COVERING OR BY APPLICATION OF APPROVED CURING COMPOUNDS. MINIMUM CURING PERIOD SHALL BE 7 DAYS. NO CURING COMPOUND SHALL BE PLACED NEAR CONSTRUCTION JOINTS.
- WELDING OF REINFORCEMENT SHALL NOT BE PERMITTED UNLESS SHOWN ON THE DRAWINGS.
- NO HOLES OR CHASES OTHER THAN THOSE SHOWN ON THE STRUCTURAL DRAWINGS SHALL BE MADE IN CONCRETE MEMBERS WITHOUT THE PRIOR APPROVAL OF THE ENGINEER.

PAVEMENT MARKING NOTES:

- ALL PAVEMENT SYMBOLS, INCLUDING CYCLE SYMBOLS, SHALL BE INSTALLED USING COLD APPLIED PLASTIC (SLOW CURE 2-PART EPOXY PAVEMENT MARKING) IN ACCORDANCE WITH TMR TECHNICAL SPECIFICATION MRTS45 ROAD SURFACE DELINEATION.

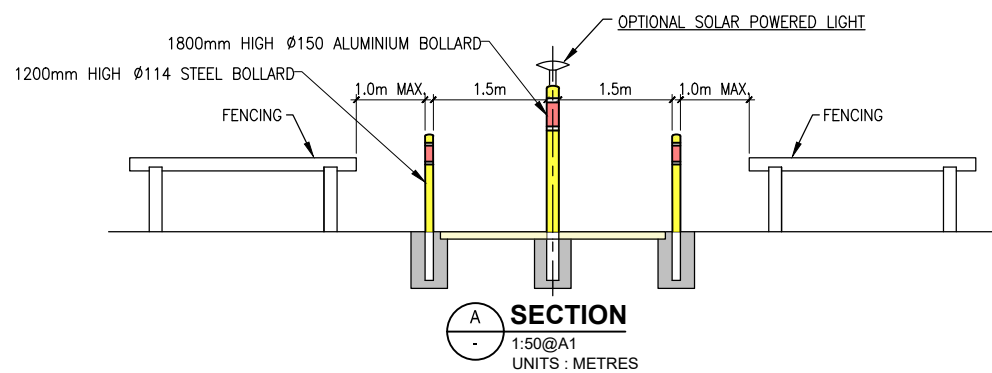
SAFETY NOTE:

THESE BOLLARDS ARE NOT VEHICLE RESTRAINTS OR VEHICLE RESISTING CRASH BARRIERS



CYCLE PATH TERMINATION INSTALLATION TYPICAL DETAIL PLAN

SCALE 1:50@A1
UNITS: METRES



OPTIONAL SOLAR POWERED LIGHT

SOLAR POWERED LIGHT :
ORCA SOLAR LIGHTING SBL2 SERIES S OR APPROVED EQUIVALENT.

LIGHT SUPPORT COLLAR :
WELD 150mm HIGH ALUMINIUM COLLAR (5mm MINIMUM WALL THICKNESS) TO SUIT LIGHT STEM DIAMETER. FIX LIGHT IN PLACE WITH STAINLESS STEEL SECURITY SCREWS (TORX).

GALVANIZED STEEL BASE SOCKET:

CHS GAL C350 GRADE SLEEVE 168.3Ø x 3.2 x 600 LONG WITH SLOTTED HINGED LID. (SLOT TO SUIT LOCKING TAB ON BOLLARD)

250mm OD x 169mm ID x 8.0mm THICK FLANGE WELDED TO TOP AND BOTTOM OF SLEEVE.

FULL ASSEMBLY TO BE HOT DIP GALVANIZED.

LINER:

PVC DN150 X 2.5 X 600 (ID 153.4) SLEEVE LINER TO SUIT 150Ø ALUMINIUM BOLLARD (OD 150.0).

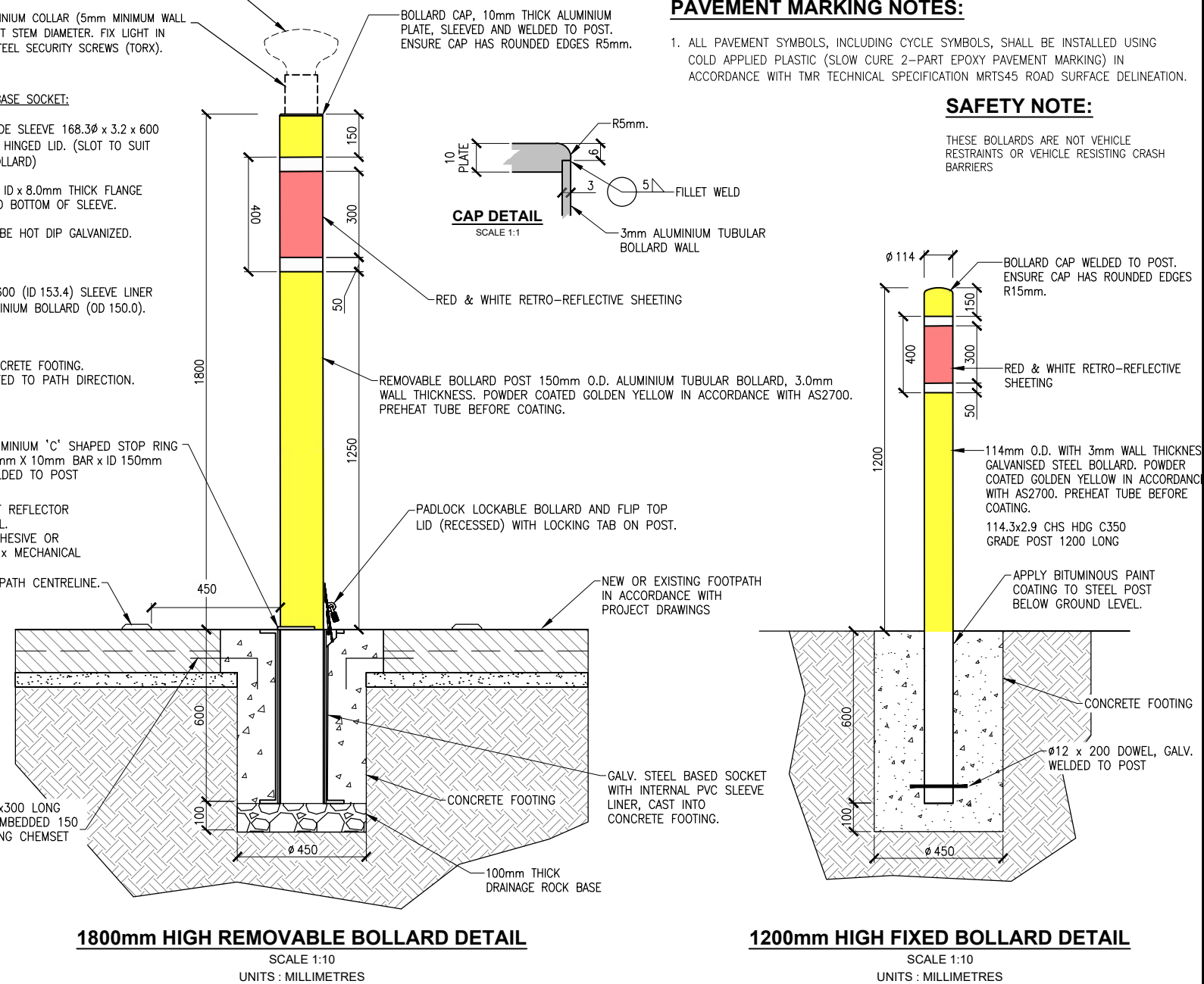
INSTALLATION:

CAST INTO N20 CONCRETE FOOTING. SOCKET LID ORIENTED TO PATH DIRECTION.

SOLAR LED RRP OR EQUIVALENT REFLECTOR PRODUCT, YELLOW BI-DIRECTIONAL. FIXED IN PLACE WITH EPOXY ADHESIVE OR THERMAL ADHESIVE PADS AND 2 x MECHANICAL FIXINGS (TYP.) LUMINOUS SIDES TO ALIGN WITH PATH CENTRELINE.

ALUMINIUM 'C' SHAPED STOP RING 10mm X 10mm BAR x ID 150mm WELDED TO POST

COGGED STARTER BARS, 4 OFF N12x300 LONG COGGED 100 INTO POST FOOTING, EMBEDDED 150 PATH SLAB AND CHEM. ANCHOR USING CHEMSET REO 502 OR APPROVED EQUIVALENT.



1800mm HIGH REMOVABLE BOLLARD DETAIL

SCALE 1:10
UNITS: MILLIMETRES

1200mm HIGH FIXED BOLLARD DETAIL

SCALE 1:10
UNITS: MILLIMETRES

DISCLAIMER

The authors and sponsoring organisations shall have no liability or responsibility to the user or any other person or entity with respect to any liability, loss or damage caused or alleged to be caused, directly or indirectly, by the adoption and use of these Standard Drawings including, but not limited to, any interruption of service, loss of business or anticipatory profits, or consequential damages resulting from the use of these Standard Drawings. Persons must not rely on these Standard Drawings as the equivalent of, or a substitute for, project-specific design and assessment by an appropriately qualified professional.



PREFERRED SHARED/CYCLE PATH
TERMINAL TREATMENT
TYPICAL ARRANGEMENT AND BOLLARD DETAILS

Standard
Drawing

S1033

A	ORIGINAL ISSUE	05/12/23
	REVISIONS	DATE

A			
---	--	--	--