



Report Card

Natural Assets & Animal Management



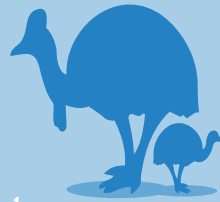
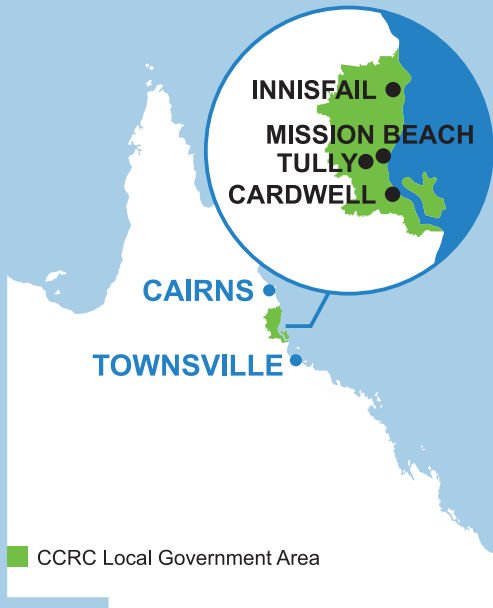
Cassowary Coast REGIONAL COUNCIL

2018 - 2019

Did you know?

Cassowary Coast Regional Council Geographical Information

Total Area & Coastline	4,700 Km ² & 464 Kilometres
Wet Tropics World Heritage Area	48% of LGA
Protected Area	58.5% of LGA
Nature Refuges	10 Refuges



Core Cassowary Habitat

53.9% of LGA



Core Mahogany Glider Habitat

8.45% of LGA

Revegetation



135

Number of people who received free trees during Council give-aways

25,804

Rainforest trees produced



Weed Control

Number of hectares of priority aquatic weed control

35



Pest Animal Management

4400

Feral Pigs controlled across all partners



Number of coordinated wild dog control events	2
Number of feral pig traps for loan	35
Number of motion sensing cameras for loan	90

Fire Management

26

Kilometres of fire breaks maintained or constructed

Natural Assets Visitor Infrastructure

9.4

Kilometres of walking tracks
1.9km of new tracks



16

Public boat ramps maintained by CCRC



635 Hectares

Total area subject to environmental burn program

NATURAL ASSETS

Partnerships

CCRC has been working in partnership with QPWS, traditional owners and Biosecurity Queensland to respond to an infestation of Koster's Curse in the World Heritage listed rainforests of Wooroonooran National Park. The partnership comes together for an annual task force operation which is complimented by Qld Feral Pest Initiative funding supporting traditional owners working on country to respond to the problem.

Beaches

Council monitors coastal erosion and vegetation condition on our remarkable beaches. This year, works included erosion mitigation along 1km of coastal areas, including major sand relocation works on Dunk Island to maintain amenity and protect foreshore trees and jetty infrastructure.

Planning for the future

The CCRC Natural Assets Management Advisory Committee has worked with local stakeholders to develop the next generation of the Cassowary Coast Local Area Biosecurity Plan for Invasive Plants and Animals. The plan and supporting Surveillance Program map out the key priorities and strategies for responding to invasive plants and animals in the region.

Patrols



Total number of wandering dogs and cats intercepted

Registrations



Total number of dog registrations



Number of wandering animal complaints

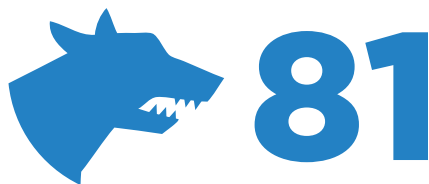


354



128

Incidents



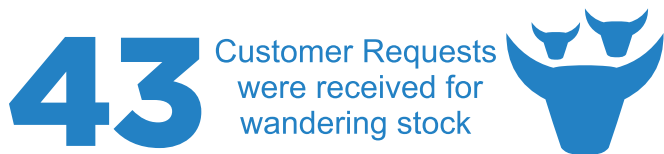
The number of dog attacks that CCRC responded to

Impoundments

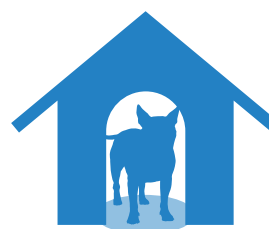


Dogs and cats reunited with their owners

Stock Management



Customer Requests were received for wandering stock



44 dogs & cats rehomed

Marketing

CCRC is aware that animal management is more about managing people than managing animals. A marketing strategy has been developed that focusses on the theme, "be as awesome as your dog thinks you are". This central point in our Good Dog Owners guide will drive our messages on barking, straying, aggression, registration and pet litter.

Additional Staff

Increased resources are now in place to engage consistently and successfully with the community with regard to responsible pet ownership.