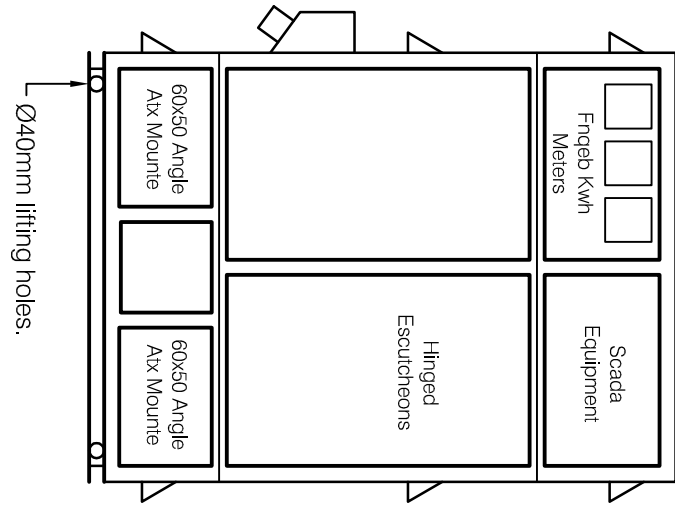
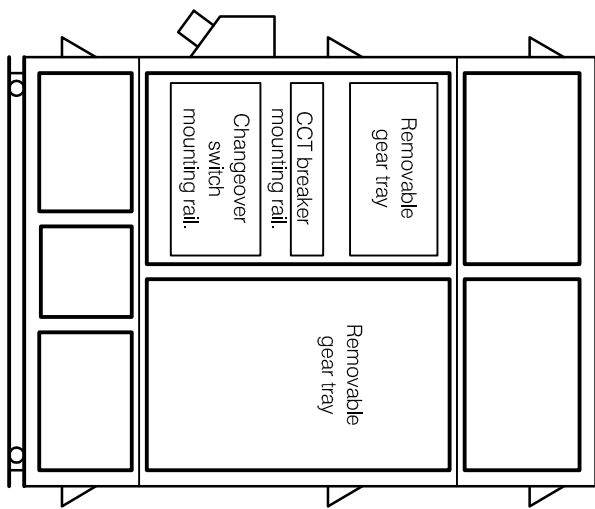


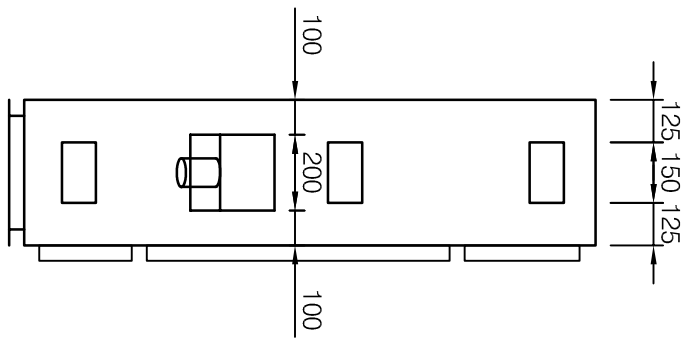
FRONT ELEVATION.



FRONT ELEVATION WITH DOORS OFF.



FRONT ELEVATION WITH ESCUTCHEONS OFF.

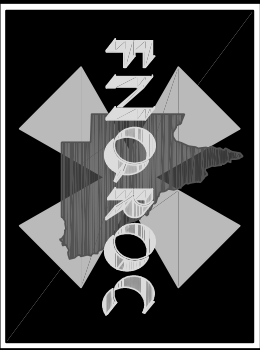


END ELEVATIONS AND SECTIONS.

- NOTES:**
1. Cubicle to be manufactured from 3.15mm Marine grade Aluminium.
  2. Powdercoat complete cubicle:  
Inside - White in colour.  
Outside - Ameron "Amerlock 400" Aluminium.
  3. Provide gauze behind all vents.
  4. Install door rubbers held in position by means of metal framing.
  5. Provide door stays that hold doors open at least 90°.
  6. Provide 250 x 250 x 40mm drawing holder inside one door.

**DISCLAIMER**

The authors and sponsoring organisations shall have no liability or responsibility to the user or any other person or entity with respect to any liability, loss or damage caused or alleged to be caused, directly or indirectly, by the adoption and use of these Standard Drawings including, but not limited to, any interruption of service, loss of business or anticipatory profits, or consequential damages resulting from the use of these Standard Drawings. Persons must not rely on these Standard Drawings as the equivalent of, or a substitute for, project-specific design and assessment by an appropriately qualified professional.



DUAL MODULE  
ELECTRIC CONTROL BOX

A	ORIGINAL ISSUE	12/3/04
	REVISIONS	DATE

Standard Drawing  
S9005