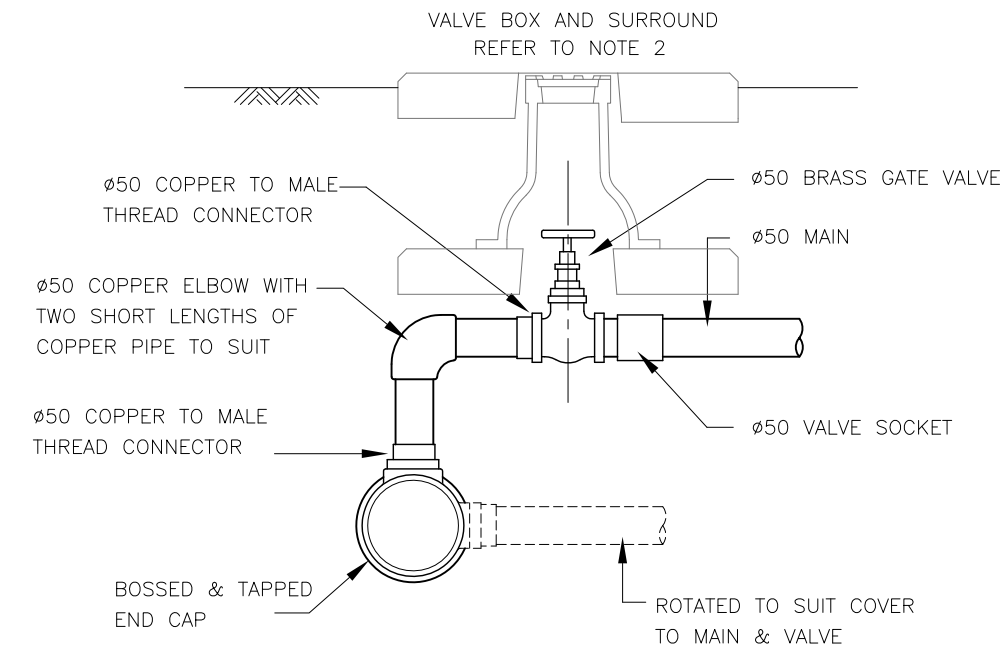
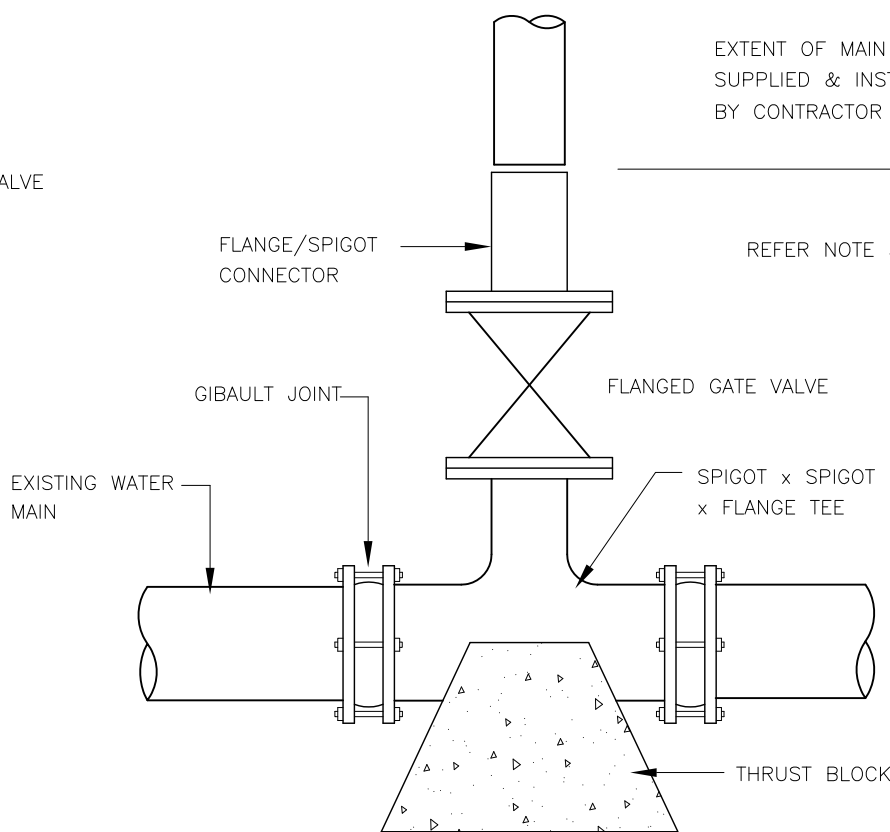


ENDCAP DETAIL

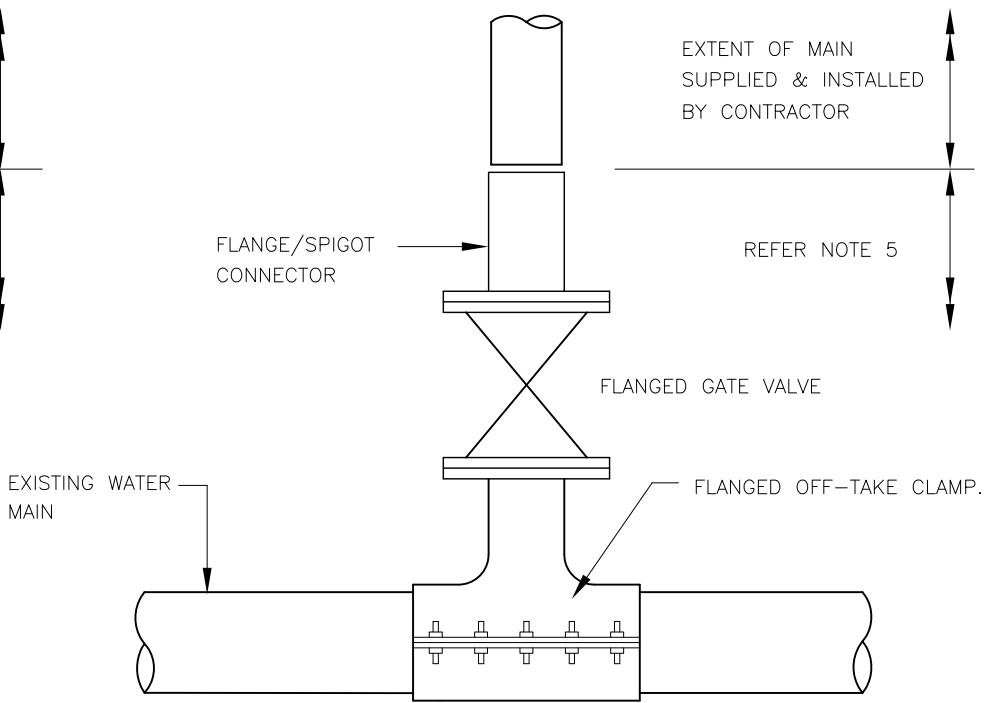


50mm MAIN CONNECTION



PLAN

CONNECT TO EXISTING MAINS 'A'



PLAN

CONNECT TO EXISTING MAINS 'B'

(REFER NOTE 6)

NOTES

1. COPPER PIPE CONFIGURATION MAY BE ROTATED TO HORIZONTAL AND MODIFIED TO SUIT ANGLE TO TAKE OFF, SO DEPTH OF COVER TO WATER MAIN AND VALVE IS MAINTAINED.
2. FOR VALVE BOX INSTALLATION REFER TO STANDARD DRAWING S2000
3. CONNECTION DETAILS TO MAINS GREATER THAN 300mm DIA ARE TO BE TO THE SPECIFIC REQUIREMENTS OF COUNCIL AND ARE TO BE DETAILED WITH ENGINEERING DESIGN.
4. CONNECTIONS TO EXISTING MAINS SHALL BE CARRIED OUT BY COUNCIL AT DEVELOPERS COST.
5. LOCAL AUTHORITY MAY AT IT'S OPTION REQUIRE THE USE OF STAINLESS STEEL TAPPING SADDLES IN LIEU OF TEES.
6. 50mm NB VALVES ARE NOT PERMITTED IN T.R.C.

C	REMOVE NOTE 4; ADD NOTES	25/10/17
B	CRC DRAWING ADOPTED	28/11/12
A	ORIGINAL ISSUE	12/03/04
REVISIONS		DATE

DISCLAIMER

The authors and sponsoring organisations shall have no liability or responsibility to the user or any other person or entity with respect to any liability, loss or damage caused or alleged to be caused, directly or indirectly, by the adoption and use of these Standard Drawings including, but not limited to, any interruption of service, loss of business or anticipatory profits, or consequential damages resulting from the use of these Standard Drawings. Persons must not rely on these Standard Drawings as the equivalent of, or a substitute for, project-specific design and assessment by an appropriately qualified professional.



MAIN CONNECTION DETAILS

Standard
Drawing
S2020

A	B	C		
---	---	---	--	--