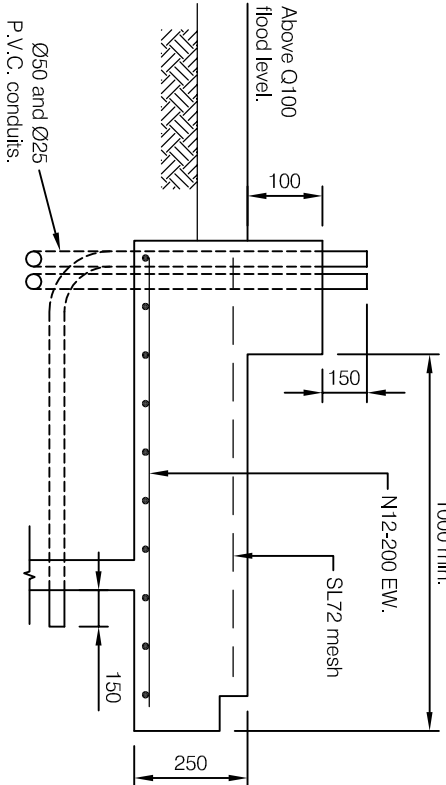
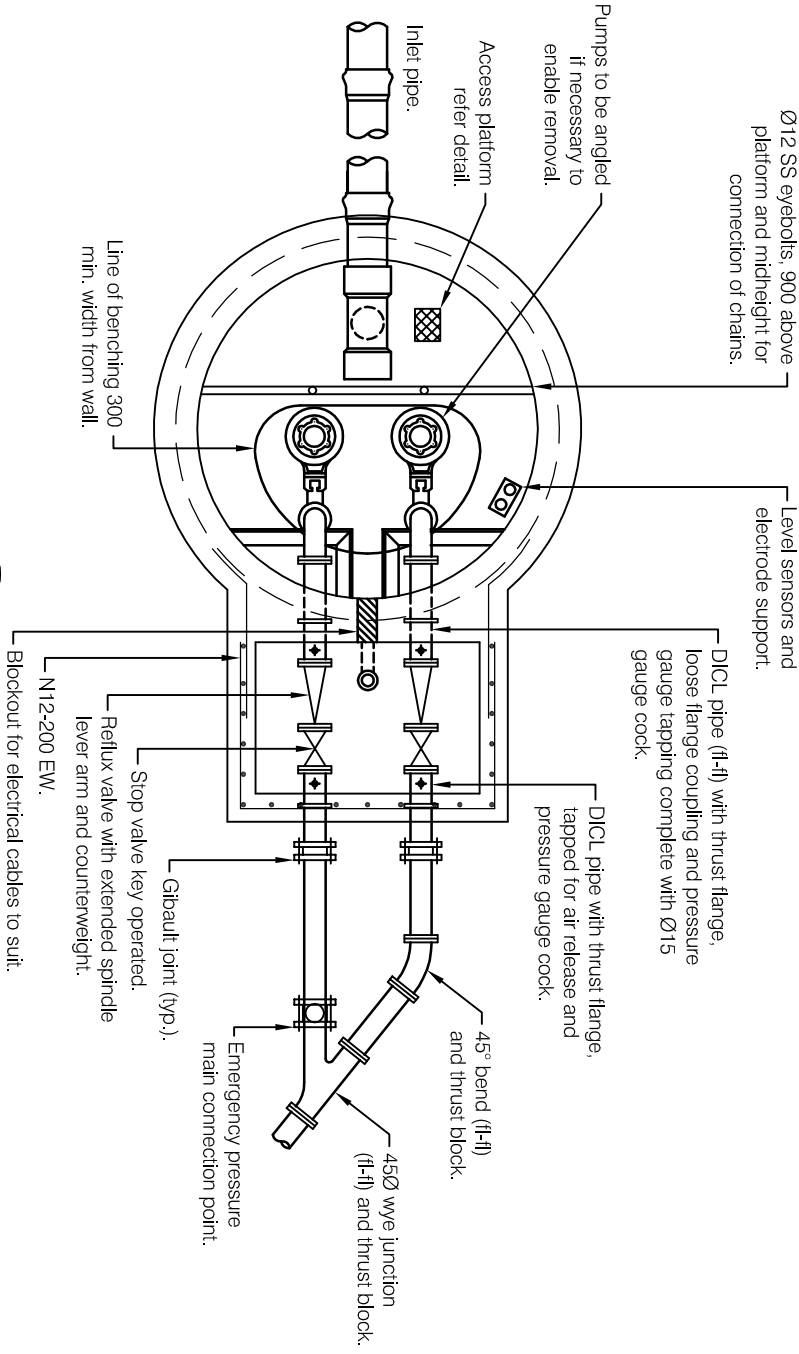


SECTIONAL ELEVATION

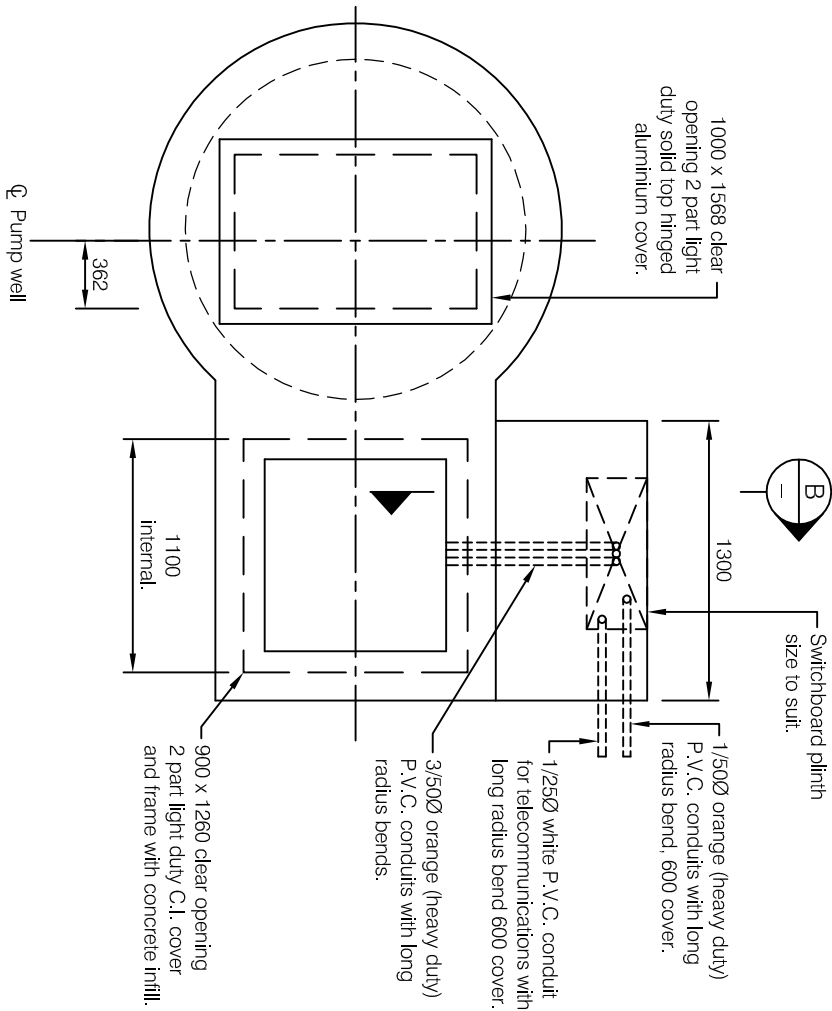
- NOTES**
1. This drawing shall be read in conjunction with Standard drawings S3030 and S3035.
  2. Pump well and valve pit shall be poured against undisturbed soil and all concrete shall be grade N32 in accordance with AS 1379 and AS 3600, cover 65 mm or as required according to exposure classification.
  3. For relative levels of A to E, size of inlet and discharge pipes, conduit sizes and site orientation refer project drawings.
  4. Where the pumping station is connected in part of wholly in open cut excavation, backfill under the valve pit section shall be approved material compacted to 98% of the Standard maximum dry density in accordance with AS 1289 E1.1.
  5. All internal surfaces of the pumpwell and valve pit shall be coated with Peelless Emulsion "Epigen 1311" of Watlyl "Signaguard CSF 75" (White or Off white). The concrete surface shall be smooth and free from holes and lightly sandblasted or acid etched before painting. The concrete surface shall have cured for not less than 28 days.
  6. The paint shall be applied in two coats with a total dry film thickness of not less than 600 microns.
  7. Reflux valves shall be coated internally with a fusion bonded epoxy.
  8. Reflux valves shall be coated internally with a fusion bonded epoxy.
  9. Reflux valves shall be coated internally with a fusion bonded epoxy. Before final coat power wire brush to AS 1627.
  10. Within two hours paint with two coats of an approved tar epoxy . Minimum total D.F.T. 0.4mm.
  11. All steelwork shall be hot dipped galvanised after fabrication.
  12. All dimensions are in millimetres.



SECTION



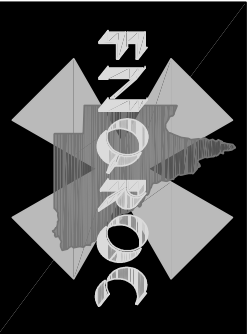
SECTION



PLAN

DISCLAIMER

The authors and sponsoring organisations shall have no liability or responsibility to the user or any other person or entity with respect to any liability, loss or damage caused or alleged to be caused, directly or indirectly, by the adoption and use of these Standard Drawings including, but not limited to, any interruption of service, loss of business or anticipatory profits, or consequential damages resulting from the use of these Standard Drawings. Persons must not rely on these Standard Drawings as the equivalent of, or a substitute for, project-specific design and assessment by an appropriately qualified professional.



SEWERAGE PUMP STATION  
CAST INSITU

Standard  
Drawing  
S3020

A B